

Hyde Park Selectboard
PO Box 98
Hyde Park, VT 05655

January 27, 2016

Warren Foster, Acting District Coordinator
Vermont Natural Resources Board
440 Asa Bloomer State Office Building
Rutland, VT 05701

Re: McMahon Bros. LLC, Hyde Park, VT
Subj.: Land Use Permit Application #6L0170-2

Dear NRB:

The Hyde Park Selectboard discussed this application on January 27, 2016. We are pleased to provide this letter of support connect pedestrians from/to the McMahon Bros. LLC project to East Main Street.

Pedestrian connections within the Village of Hyde Park are part of a long-term effort of revitalizing the Village of Hyde Park, which will in turn benefit the entire town. We support the use of existing highway right-of-ways to achieve the town's long-term goals in the 2012 Town and Village Comprehensive Development Plan:

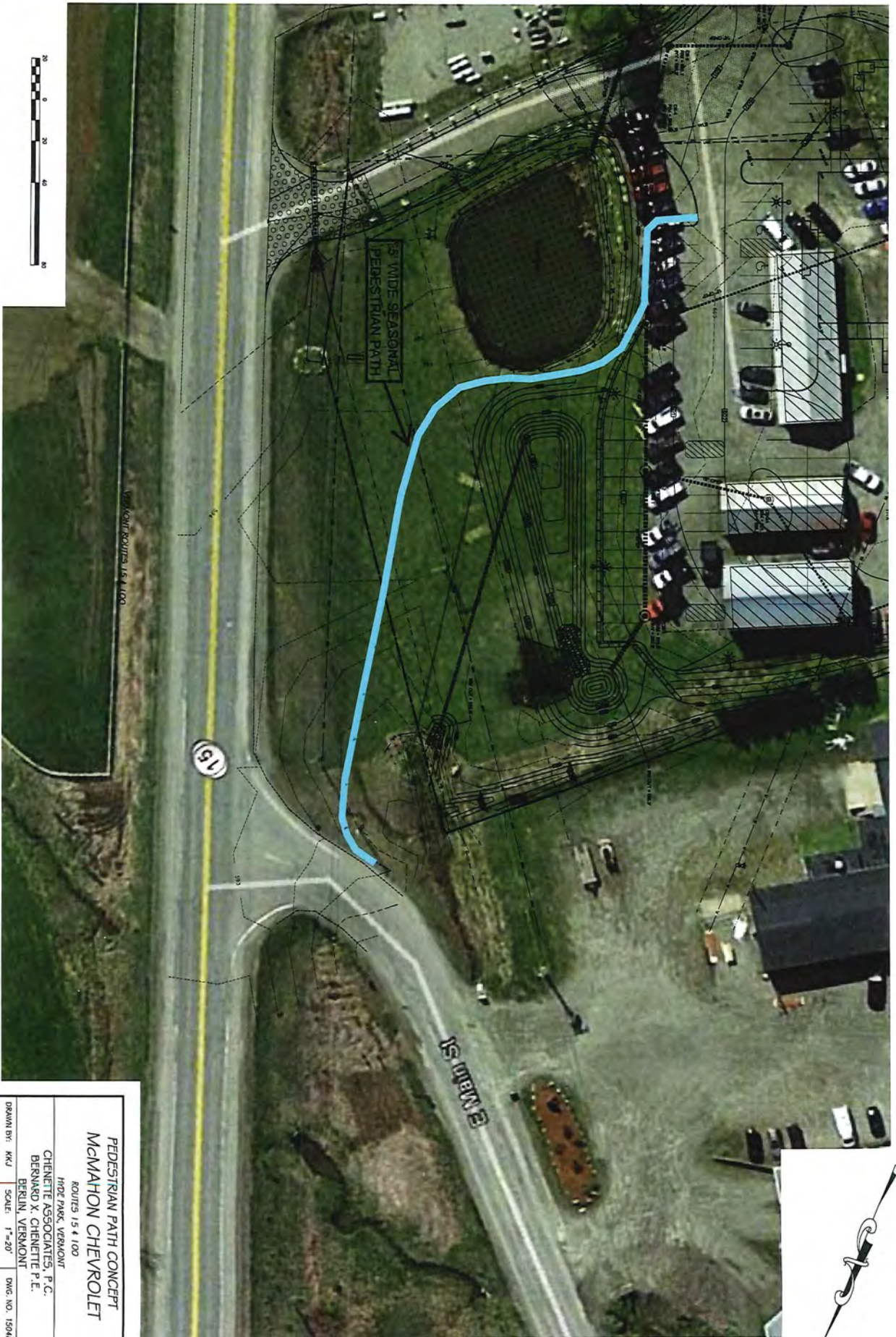
- To expand opportunities for residents to access alternative modes of transportation, whether by carpool, public transit, walking, or bicycling.
- To maintain a safe, pedestrian-oriented village that will support a vibrant local economy.

While final review of any construction in the highway right-of-way is still required under the 19 VSA 1111 permit process, we strongly support the conceptual connection of the project to East Main Street.

Please feel free to contact me at anytime with any questions.

Sincerely,

David Gagnier, Chair
Hyde Park Selectboard
802-888-7808



**PEDESTRIAN PATH CONCEPT
McMAHON CHEVROLET**

HOPE PARK, VERMONT
 ROUTES 15 & 100
 CHENETTE ASSOCIATES, P.C.
 BERNARD X. CHENETTE P.E.
 BERLIN, VERMONT
 DRAWN BY: RKJ
 SCALE: 1"=20'
 CHECKED BY: BWC, PT
 DATE: 01/18/16
 DWG. NO. 1504BC
 SHEET: 013